

Detail

### Sanctuary Display Crucifix

Code: 001

Photo Codes: 8225.JPG

8226.JPG

- 90 inches tall X 51.5 inches wide
- Estimated Weight: 30 lbs
- no markings or labels
- eye hooks for suspending
- no visible damage
- wooden cross ; wooden Christus
- gracefully aged overall

*from  
St. Augustine  
church*



*St. Augustine Church, Rochester, NY 2006*

### Sanctuary Display Crucifix (suspended) Code: 002

Photo Codes: 8227, 8228, 8229, 8230.JPG

\_DSC0034 (St. Augustine set)

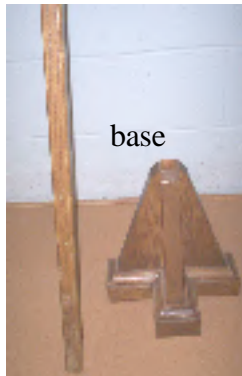
- 125 inches tall X 79 inches wide
- Estimated Weight: 150 lbs
- heavy duty metal brackets; short chain segment at top.  
The upper beam metal mounting bracket (seen at left photo is not included.
- nose has paint smudge (no damage);
- repairable damage to thorns.
- wooden cross ; wooden Christus



detail



detail



base

### Processional Crucifix with Wooden Base

Code: 003

Photo Codes: 8231, 8232, 8233.JPG

78 inches tall X 12 inches wide

Estimated Weight: 7lbs crucifix; 8lbs. base

- no markings or labels
- wooden cross ; metal Christus (silver coloration)

The processional crucifix (not shown) from St. Augustine Church is now the processional cross in use at the New St. Monica.



detail

### Processional Crucifix with base

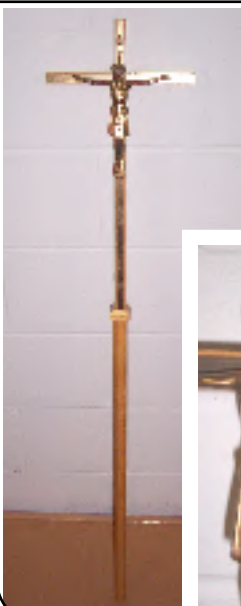
Code: 005

Photo Codes: 8237, 8238, 8239.JPG

83 inches tall X 12 inches wide

Estimated Weight: 15lbs total

- no markings or labels
- faux wooden cross ; metal Christus (bronze coloration)
- sections have a loose fit.



Detail

### Processional Crucifix without base

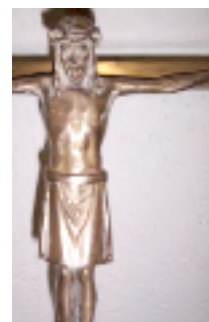
Code: 029

Photo Codes: 8368, 8369, 8370 .JPG

48 in. tall X 10 in. wide

Est. Weight: 9lbs total

- no markings or labels
- wooden cross;
- metal Christus (bronze coloration)
- no pedestal base



Detail

### Processional Crucifix without base

Code: 041

Photo Codes: 8405, 8406, 88407 .JPG

41 in. tall X 10 in. wide

Est. Weight: 9lbs total

- no markings or labels
- metal cross (bronze coloration)
- metal Christus (bronze coloration)
- lower rod (brass?)
- no pedestal base





### Wall-Mounted Crucifix

Code: 006

Photo Codes: 8240, 8241, 8242 .JPG

51 in. tall X 26 in. w.  
Est. Weight: 10 lbs.

- no labels nor markings
- wooden cross
- painted ceramic Christus
- no pedestal base
- gracefully aged



### Wall-Mounted Crucifix

Code: 007

Photo Codes: 8243, 8244, 8245 .JPG

32 in. tall X 16 in. w.  
Est. Weight: 10 lbs.

- no labels nor markings
- wooden cross
- plain ceramic Christus
- no pedestal base
- gracefully aged



### Wall-Mounted Crucifix (similar to 009 & 010)

Code: 008

Photo Codes: 8246, 8247 .JPG

- 28 in. tall X 14 in. w.  
Est. Weight: 6lbs
- there is a 1930s NRA National Recovery Act paper label on reverse.
  - wooden cross
  - naturalistic, painted ceramic Christus
  - no pedestal base
  - some paint missing at crown of thorns
  - gracefully aged



### Crucifix with Removable Base

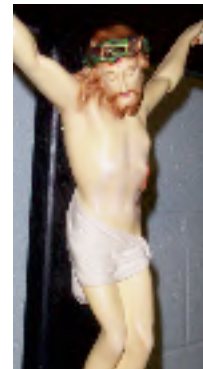
Similar to #008

Code: 009

Photo Codes: 8248, 8249, 8250 .JPG

38 in. tall (incl. base)  
X 14 in. w.

- Est. Weight: 12lbs
- no labels nor markings
  - metal loop for wall mounting on reverse
  - wooden cross
  - naturalistic, painted ceramic Christus
  - "stepped" wooden pedestal base (four levels).



### Wall-Mounted Crucifix

Code: 010

(similar to 008 & 009 & 012)

Photo Codes: 8251, 8252, 8253 .JPG

30 in. tall X 15 in. w.  
Est. Weight: 7lbs

- no label; no markings
- wooden cross (stained wood)
- naturalistic, painted ceramic Christus
- no pedestal base
- loosely attached



### Wall-Mounted Crucifix

Code: 011

Photo Codes: 8254, 8255, 8256 .JPG

32 in. tall X 13 in. w.  
Est. Weight: 5lbs

- Stamped: "Made in Switzerland: S. Thomann"
- wooden cross
- naturalistic, wood-appearing Christus
- no pedestal base
- appears to be a high quality piece in excellent condition





### Wall-Mounted Crucifix

Code: 012

*similar to 008, 009 & 010*

Photo Codes: 8257, 8258, 8259 .JPG

29 in. tall X 14.5 in. w.

Est. Weight: 6lbs

- no label; no markings
- wooden cross
- naturalistic, painted ceramic Christus
- no pedestal base
- chipped paint; crack repaired



### Wall-Mounted Crucifix

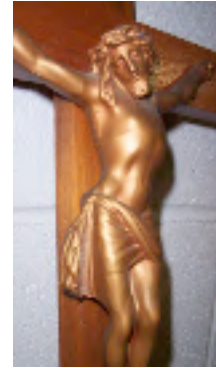
Code: 013

Photo Codes: 8260, 8261, 8262 .JPG

24 in. tall X 12 in. w.

Est. Weight: 10 lbs

- unreadable vendor label
- wooden cross
- metallic Christus (copper-bronze coloration)
- heavy overall weight
- no pedestal base
- some scratches on wood



### Wall-Mounted Crucifix

Code: 014

Photo Codes: 8263, 8264, 8265 .JPG

24 in. tall X 12 in. w.

Est. Weight: 7 lbs

- no label; no markings
- wooden cross
- metallic Christus (silver coloration)
- no pedestal base
- cracks appearing in metal (not solid)
- recessed slot to accept nail head



No photo

similar in appearance and coloration to O14

### Wall-Mounted Crucifix

Code: 015

*similar to 014*

Photo Codes: 8263, 8264, 8265 .JPG

24 in. tall X 12 in. w.

Est. Weight: 7 lbs

- no label; no markings
- wooden cross
- metallic Christus (silver coloration)
- no pedestal base
- cracks appearing in metal (not solid)
- some nicks in wood
- recessed slot to accept nail head

No photo  
similar in appearance to O14  
gold coloration  
-best condition of the 3

### Wall-Mounted Crucifix

Code: 016

*similar to 014 and 015*

Photo Codes: 8263, 8264, 8265 .JPG

24 in. tall X 12 in. w.

Est. Weight: 7 lbs

- no label; no markings
- wooden cross
- metallic Christus (bronze coloration)
- no pedestal base
- recessed slot to accept nail head



### Wall-Mounted Crucifix

Code: 017

Photo Codes: 8266, 8267, 8268 .JPG

19 in. tall X 10 in. w.

Est. Weight: 7 lbs

- no label; no markings
- wooden cross
- metallic Christus (bronze coloration)
- no pedestal base
- cracks appearing in metal (not solid)
- some nicks in wood
- recessed slot to accept nail head







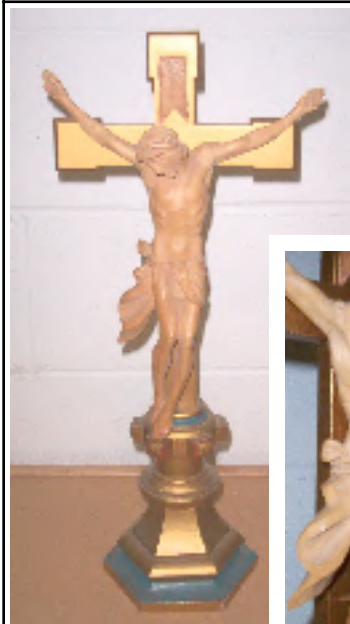
### Wall-Mounted Crucifix

Code: 018  
Photo Codes: 8269, 8270, 8271 .JPG  
30 in. tall X 15 in. w.  
Est. Weight: 5 lbs  
- no label; no markings  
- wooden cross  
- silver painted wooden Christus  
- no pedestal base  
- cracks appearing and figure joints  
- recessed slot to accept nail head



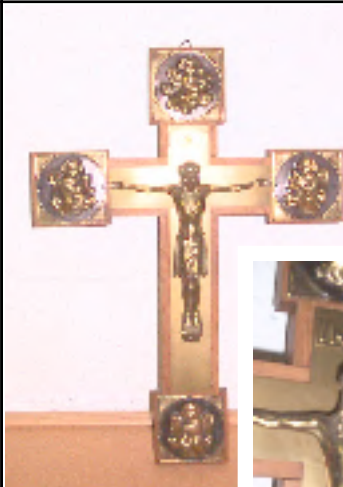
### Wall-Mounted Crucifix

Code: 019  
Photo Codes: 8272, 8273, 8274 .JPG  
20 in. tall X 10.5 in. w.  
Est. Weight: 7 lbs  
- no label; no markings  
- wooden cross  
- fading gold paint over cast metal  
- no pedestal base  
- gracefully aged



### Crucifix on pedestal (possibly a hybrid) -wooden cross resembles candle holder set #054

Code: 020  
Photo Codes: 8275, 8276, 8277 .JPG  
22 in. tall X 9 in. w.  
Est. Weight: 7 lbs  
- no label; no markings  
- wooden cross painted gold  
- wood-appearing Christus  
- pedestal base



### Wall-Mounted Crucifix

Code: 021  
Photo Codes: 8278, 8279, 8280 .JPG  
30 in. tall X 15 in. w.  
Est. Weight: 5 lbs  
- "made in Germany"  
- wooden cross  
- bronze colored metal inner cross  
- four angel adornments  
- no pedestal base  
- metal loop at top



### Crucifix on pedestal

Code: 022  
Photo Codes: 8281, 8282, 8283 .JPG  
22 in. ht. X 9 in. width at cross  
Est. Weight: 12-15 lbs  
- no label; no markings  
- heavy metal cross with gold coloration  
- metal gold coloration Christus  
- pedestal base (hollow)  
- very fragile; beginning to separate at base of cross



### Wall-Mounted Crucifix

Code: 023  
Photo Codes: 8284, 8285, 8286, 8287 .JPG  
14 in. tall X 7.5 in. wide  
Est. Weight: 5 lbs  
- metal tag: "Oratoire St. Joseph"  
- wooden cross  
- bronze colored metal inner cross  
- metal edge ornamentation  
- loose mounting at feet  
- no pedestal base  
- gracefully aged

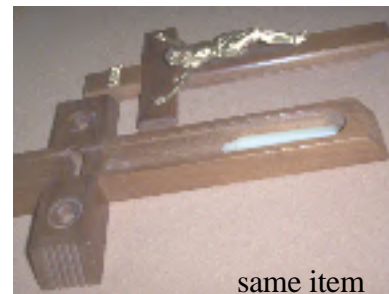
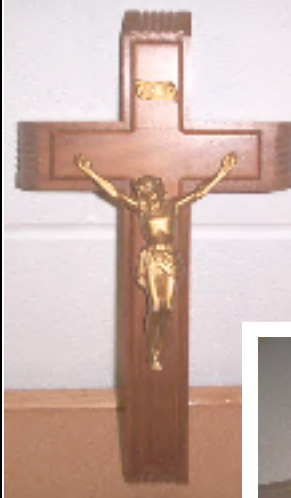




### Wall-Mounted Crucifix

Code: 024

Photo Codes: 8288, 8289, 8290, .JPG  
14 in. tall X 7.5 in. w  
Est. Weight: 5lbs  
- "Made in France"  
- wooden cross  
- bronze inlaid metal strips form inner cross  
- dark bronze colored metal Christus  
- no pedestal base  
- metal loop on reverse  
- gracefully aged



### Last Rites Kit

Code: 025

Photo Codes: 8443, 8444, 8445 .JPG  
13 in. tall X 8 in. w  
Est. Weight: 4 lbs  
- no label; no markings  
- sliding and removable top surface; unused wrapped candles; no holy water bottle; no linens  
- wooden cross; - metal Christus  
- no pedestal base

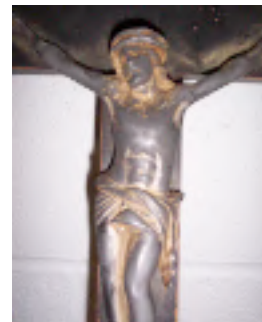
same item



### Wall-Mounted Crucifix

Code: 026

Photo Codes: 8317, 8319, 8320 .JPG  
11.5 in. tall X 6.5 in. w  
Est. Weight: 3 - 4 lbs  
- "Made in France"  
- wooden cross  
- gold coloration metal Christus  
- no pedestal base  
- metal loop on reverse



### Wall-Mounted Crucifix

Code: 027

Photo Codes: 8362, 8363, 8364 .JPG  
16 in. tall X 8 in. w  
Est. Weight: 3 - 4 lbs  
- no label; no markings  
-- wooden cross  
- gold coloration metal Christus (almost completely faded; graceful aging)  
- no pedestal base  
- weak attachment points



### Incomplete Processional Crucifix

Code: 028

Photo Codes: 8365, 8366, 8367 .JPG  
16 in. tall X 8 in. w  
Est. Weight: 12 lbs  
- no label; no markings  
- gold coloration metal cross  
- silver coloration metal Christus (has been reattached)  
- no staff base (threaded coupling)  
- missing finial knob

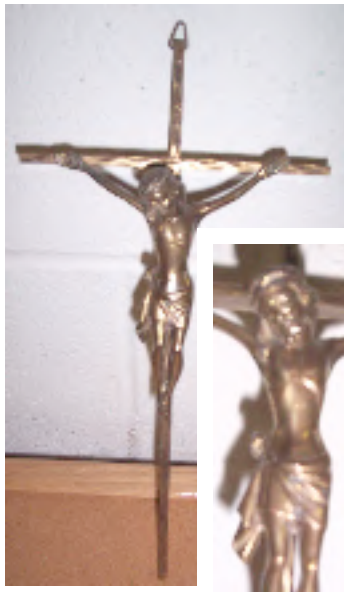


### Wall-Mounted Crucifix

Code: 030

Photo Codes: 8371, 8372, 8373 .JPG  
12 in. tall X 6.5 in. w  
Est. Weight: under 1 lb.  
- no label; no markings  
- lightweight wooden cross (stained) wood  
-- Christus (plastic?) is missing its hand;  
-- weak attachment  
-- metal loop at top  
-- no pedestal base





**Wall-Mounted  
Crucifix (stylized)**

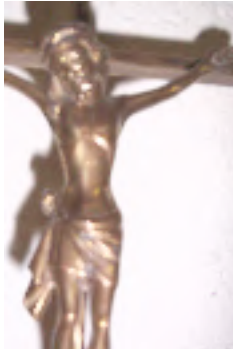
Code: 031

Photo Codes: 8374,  
8375, 8376 .JPG

9.5 in. tall X 5.5 in. w

Est. Weight: 1 lb.

- stamped: "Western Germany"
- solid metal cross (brass coloration)
- stylized brass-appearing metal Christus
- very good condition
- metal loop at top
- no pedestal base



**Crucifix  
on rounded pedestal**

*similar to 034*

(but 1/3 larger)

Code: 032

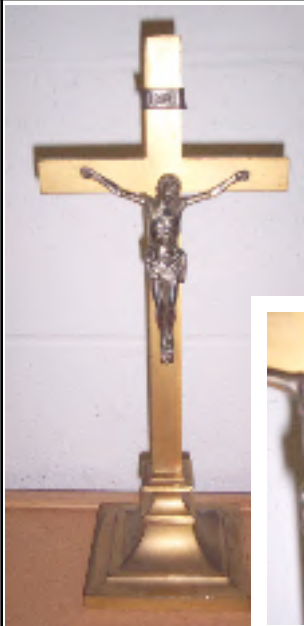
Photo Codes: 8377,  
8378, 8379 .JPG

16 in. tall incl. base

X 6 in. width (cross)

Est. Weight: 2 lbs.

- labeled: "1959"
- rounded wooden cross
- golden coloration metal Christus
- darkened white plastic tips of cross
- weak attachment
- wooden pedestal base



**Crucifix  
on square pedestal**

Code: 033

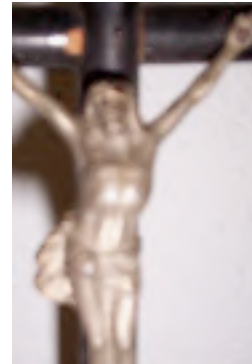
Photo Codes: 8380,  
8381, 8382 .JPG

13.5 in. tall incl. base

X 6 in. width cross

Est. Weight: 6 lbs.

- stamped: "E 1217"
- solid metal brass coloration cross
- silver coloration metal Christus; former gold appearance weathered away
- brass coloration pedestal base
- good condition



**Crucifix  
on round pedestal**

*similar to 032*

Code: 034

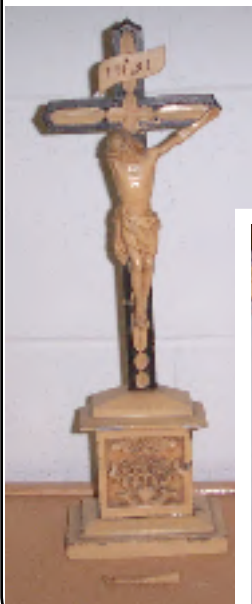
Photo Codes: 8383,  
8384, 8385 .JPG

12 in. tall incl. base

X 4 in. width (cross)

Est. Weight: 1 lb.

- rounded wooden cross
- silver coloration metal Christus
- darkened white plastic tips of cross
- weak attachment
- wooden pedestal base



**Crucifix  
on square pedestal**

Code: 035

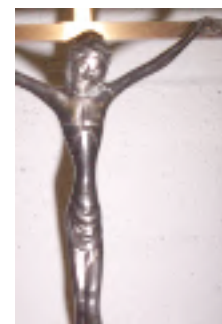
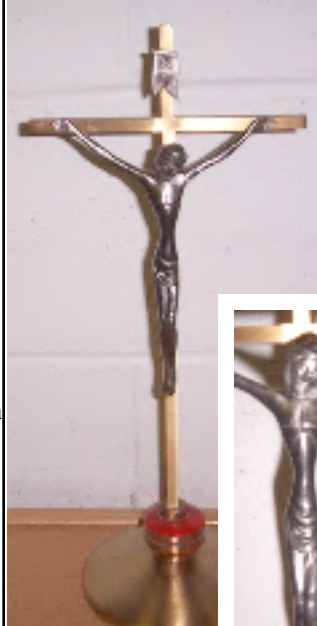
Photo Codes: 8386,  
8387, 8388 .JPG

15.5 in. tall incl. base

X 5.5 in. w. at base

Est. Weight: 1 lb.

- stamped: "8"
- wooden cross; with lighter wood trim
- painted wooden Christus; arm is broken off (repairable)
- wood pedestal base may have been carved.



**Crucifix  
on round pedestal**

Code: 036

Photo Codes: 8389,  
8390, 8391 .JPG

16 in. tall incl. base

X 7 in. w. at base

Est. Weight: 2-3 lb.

- no label; no markings
- metal cross (gold coloration with faux bright red marble accent at base;
- silver coloration metal Christus; has stylized elongated appearance
- solid low-profile circular base
- slightly mottled base



**Crucifix  
on hexagonal base**

Code: 037

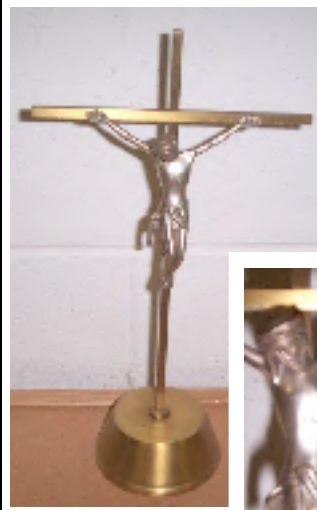
Photo Codes: 8392,  
8393, 8394 .JPG

24 in. tall incl. base

X 12 in. at cross bar

Est. Weight: 7 lb.

- no label; no markings
- metal cross (gold coloration) solid
- silver coloration metal Christus
- mounted on metal base
- excellent condition



**Crucifix  
on circular base**

Code: 038

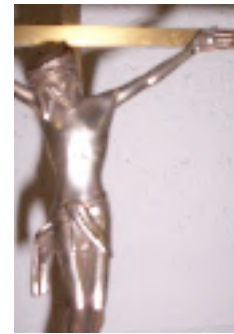
Photo Codes: 8395,  
8396, 8397 .JPG

13 in. tall incl. base

X 7.5 in. cross bar

Est. Weight: 1 - 2lbs.

- no label; no markings
- metal cross (gold coloration)
- silver coloration metal stylized Christus
- mounted on hollow metal base
- v. good condition



**Crucifix  
on square base**

Code: 039

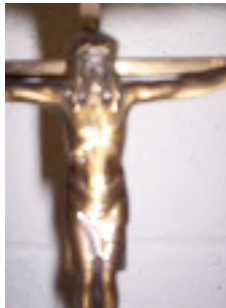
Photo Codes: 8398,  
8399, 8400 .JPG

11 in. tall incl. base

X 6 in. cross bar

Est. Weight: 1 lb.

- no label; no markings
- metal cross (gold coloration)
- gold coloration metal Christus
- mounted on plain wooden base
- weak attachment points
- poor condition



**Crucifix  
on square base**

Code: 040

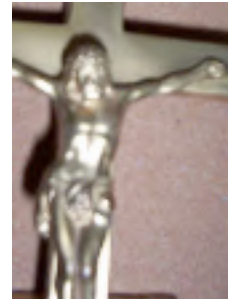
Photo Codes: 8401,  
8402, 8403 .JPG

8 in. tall incl. base

X 4 in. cross bar

Est. Weight: 1 - 2 lb.

- no label; no markings
- metal cross (gold coloration)
- gold coloration metal Christus
- mounted on metal base; needs repair (doesn't stand upright)



**Crucifix on black plastic  
base with 14 Stations**

Code: 042

Photo Code: 8408 .JPG

7 in. tall incl. base X 4 in. w.  
background mounting

Est. Weight: 4 oz

- "Made in Italy"

- plastic painted cross
- plastic naturalistically-painted Christus
- mounted on plastic base featuring small depiction of each Station of the Cross (a child's gift)



**Crucifix on white plastic  
base with 14 Stations**

(matches 041)

Code: 043

Photo Code: 8409 .JPG

7 in. tall incl. base X 4 in.  
background mounting

Est. Weight: 4 oz

- "Made in Hong Kong"

- plastic painted cross
- plastic naturalistically-painted Christus
- mounted on plastic base featuring small depiction of each Station of the Cross (a child's gift)





**Finial Crosses** for mounting atop pole or rod Code: 044  
 Photo: 8410, 8411 .JPG 9.5 in. tall X 6 in. w. ; 1/8 in thick  
 Est. Weight: 1 lb. each ; unthreaded ; solid brass?  
 - no markings; good condition; gracefully aged (3 of 3)



**Finial Cross with tab**  
 Code: 045  
 Photo Codes: 8412, 8413, 8414 .JPG  
 6 in. tall X 3.5 in.  
 Est. Weight: 8 oz  
 - has insert tab at base extending 3/16th in.  
 - no label; no markings  
 - metal construction; plated; solid  
 - excellent condition  
 - one only



detail



**Finial Wooden Cross with angle iron bracket**  
 Code: 046  
 Photo Codes: 8415, 8416 .JPG  
 - 12 in. tall X 8 in. .75 inch thick  
 Est. Weight: 10 oz  
 - angle iron bracket for attaching to the top of a surface  
 - no label; no markings  
 - varnished wood  
 - excellent condition  
 - one only



**Last Rites Kit** (complete)  
 Code: 025-B  
*compare with 025-A*  
 Photo Codes: 8591, 8592, 8593 .JPG  
 - 7 in. long X 4.5 in. w x 2 in. depth  
 - Est. Weight: under 1 lb.  
 - no label; no markings  
 - unused wrapped candles;  
 - holy water bottle, linens, candle holder cups built in.  
 - wooden cross  
 - metal Christus  
 - comes in metal case with leather cover materials;  
 - case slightly dented



detail

**Candelabra pair with circular base**  
 (for 5 candles each)  
 Code: 047  
 Photo Codes: 8423, 8424 8425, 8426, 8429 .JPG  
 - 16 in. tall X 18 in. wide  
 - Est. Weight: 8 lbs. each  
 - no label; no markings  
 - leaf & vine motif (no additional Christian symbolism)  
 - brass coloration  
 - vine segment is cast metal (solid)  
 - unit at left missing tubular midsection  
 - unit at right has crack at central stem  
 - loose fit overall  
 - arms do not articulate (1 long piece)  
 - two candelabra only this style

**Candelabra pair with hexagonal base (for 5 candles each)**

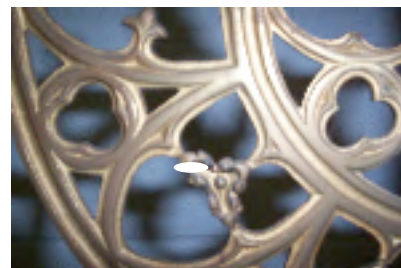
Code: 048

Photo Codes: 8427, 8428 .JPG

16 in. tall X 18 in. wide

Est. Weight: 8 lbs. each

- Markings: L13908 and L12988
- no religious symbols at base
- brass coloration (each item same color)
- arms do not articulate (1 long piece)
- two candelabra only this style



detail



**Telescoping Candelabrum with circular base**

(for 7 candles each) ; one unit only this type

Code 049 Photo Codes: 8430 and 8431 .JPG



detail

One unit only.

- 27 in. tall X 23 in. wide (highest)
- 19 in. tall X 23 in. wide (lowest)
- thumbscrew releases stem to raise / lower
- removable arms (do not articulate)
- Est. Weight: 10 lbs.
- no label; a tri-lobed stamp on base
- ornate detailing but no Christian symbols
- brass coloration ; some fading
- tubular stem ; original thumbscrews
- parts fit securely; fixable askew top



detail



**Articulating Candelabra pair with**

circular base (for 3 candles each);

Code 050

Photo Codes: 8447, 8448, 8449 .JPG

Part of a set with decreasing sizes involving #051; 052 & 053

(each one has removable "arms" that can articulate to form an **inverted "Vee"** or a **diagonal slope**) (see 8457)

- 14.5 in. tall X 8.5 in. wide
- Est. Weight: 5 lbs. each
- no label; no markings
- no Christian symbolism
- brass coloration; moderate fading
- original thumbscrews
- good condition
- two candelabra only in this size (**SHORTEST** of this series)

See 052 for inverted slope



## Detail for 050, 051, 052



Candelabrum #1



Candelabrum #2 (no arms)

### Articulating Candelabra with **hexagonal** base (for 5 candles total); **one** complete unit

Code 051

Photo Codes: 8450, 8451, 8452 .JPG

Part of a set with decreasing sizes involving #050 and 052; others have a circular base

(unit has removable "arms" that can articulate to form an **inverted "Vee"** or a **diagonal slope**)

- 19 in. tall X 16 in. w. (might telescope higher)
- Est. Weight: 8 lbs.
- no label; no markings
- no Christian symbolism
- brass coloration; moderate fading
- original thumbscrews
- good condition
- **one candelabrum only in this size has the two arms**; the other unit is missing its arms.
- **TALLEST** of this series



detail



### Articulating Candelabra with **hexagonal** base (for 5 candles each) ; **two** units in this size

Code 052

Photos: 8453, 8454, 8455 .JPG

Part of a set with decreasing sizes involving #050 & 051 ; [050 has a circular base]

(unit has removable "arms" that can articulate to form an inverted "Vee" or a diagonal slope)

- 15.5 in. tall X 8.5 in. w. (might telescope higher)
- Est. Weight: 6.5 lbs.
- no label; no markings
- no Christian symbolism
- brass coloration; moderate fading
- original thumbscrews
- good condition
- **two** candelabra in this size (**MEDIUM**)

Slope option  
for series



### Low Candle Holders

Code: 053

Photo Codes: 8439, 8440

- 4 in. tall X 7 in. diameter
- Est. Weight: 4 lbs. each
- "Trants; Ziegler \$30 pair" (old label; circa 1968)
- no Christian symbolism
- brass coloration;
- good condition



### Large Painted Wood Candle Holders with metal holders Code 054

Photo Codes: 8441, 8442

- 18 in. tall X 6 wide at base
- sturdy; distressed paint ; this series has a lot of "character"
- compare with crucifix Code **020**

Est.Weight: 4 lbs. each



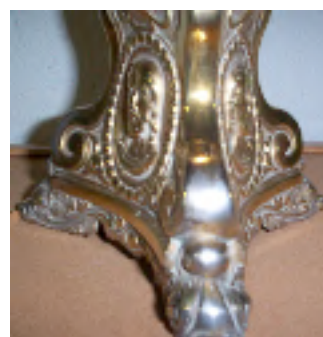
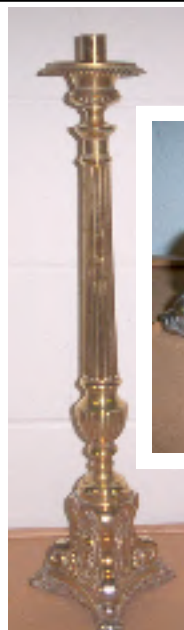
detail

### Large Candle Holder

Code: 055

Photo Codes: 8459,  
8460, 8461 .JPG

- 18 in. tall X 5 in. (base)
- Est. Weight: 18 lbs.
- no label; no markings
- raptors motif (no additional Christian symbolism)
- ornate pillar
- brass coloration
- very heavy for its size
- missing one "ball" foot



detail

### Large Candle Holder

Code: 056

Photo Codes: 8462,  
8463, 8464 .JPG

- 25 in. tall X 7 in. (base)
- Est. Weight: 7 lbs.
- no label; no markings
- tripod base depicts heads of Jesus, Mary and Joseph
- timeworn finish



detail

### Large Candle Holders (2) with circular base

Code: 057

Photo Codes: 8465,  
8466, 8467 .JPG

- 27.5 in. tall X 6 in. (diameter at base)
- Est. Weight: 6 lbs. (each)
- no Christian symbolism
- no label;
- no markings
- timeworn finish but solid



detail

### Large Candle Holders (2) with hexagonal base

Code: 058

Photo Codes: 8468,  
8469, 8470 .JPG

- 24 in. tall X 9 in. (diameter at base)
- Est. Weight: 10 lbs. each
- no markings
- no Christian symbolism
- solid marble stem pieces
- brass coloration metal base
- timeworn finish



detail

### Large Wooden Candle Holders (2) with hexagonal base

Code: 059

Photo Codes: 8471,  
8472, 8473 .JPG

compare to 054, 020,  
060 & 061

- 29 in. tall X 9 in. (diameter at base)
- Est. Weight: 8 lbs. each
- no markings
- no Christian symbols
- painted wood
- solid
- distressed paint



detail

### Large Candle Holders (2) with hexagonal base

Code: 060

Photo Codes: 8474,  
8475, 8476 .JPG

compare to 054, 020,  
059 & 061

- 19 in. tall X 6 in. (diameter at base)
- Est. Weight: 5 lbs. each
- no markings
- no Christian symbols
- painted wood
- solid
- distressed paint





detail



- Large Candle Holders (2) with hexagonal base** Code: 061  
Photo Codes: 8480, 8481 .JPG  
compare to 054, 020, 059 060
- 15.5 in. tall x 5 in (at base)
  - Est. Weight: 4 lbs. each
  - no markings
  - no Christian symbols
  - painted wood
  - repairable
  - distressed paint



underside

- Book Stand** (in the same style as previous photos)  
Code: 062  
Photo Codes: 8688, 8689 .JPG  
compare to 054, 020, 059, 060 & 061
- 15.5 in. tall X 5 in. (at base)
  - Est. Weight: 4 lbs.
  - no markings
  - painted wood
  - paint is in good condition
  - one item only

**Low Metal Candle Holders (4) with round base** Code 063  
compare with Crucifix #036

Photo Code: 8555, 8556 .JPG; 4.5 in tall X 5.25 in at max. w.



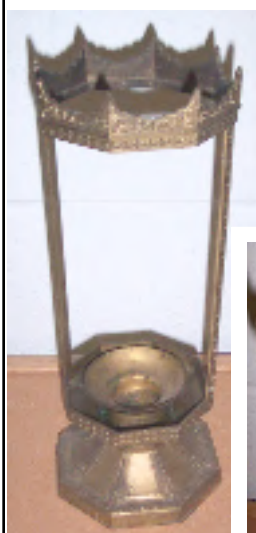
Est. Weight: 1.5 lbs. each ; faux red marble trim; good condition  
- no markings ; - no Christian symbols ; brass appearance



detail

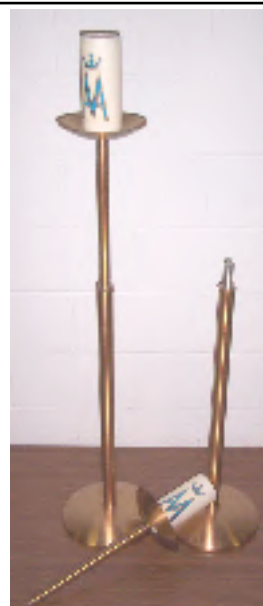


- Spring Loaded Candle Holders (4)**  
Code: 063  
Photo Code: 8483, 8484, 8485 .JPG
- 17.5 in. tall X 1.25 diameter
  - Est. Weight: 12 oz. each
  - no markings
  - no Christian symbols
  - two gold painted metal (faded with chips at base)
  - 3 appear brass; 1 resembles galvanized steel
  - timeworn look



detail

- Table Mounted Large Vigil Candle Holder (1)**  
Code: 064  
Photo Code: 8486, 8487, 8488 .JPG
- 12 in. tall X 5 in. width
  - Est. Weight: 3 lbs
  - stamped: "PS" (?)
  - no Christian symbols
  - brass coloration
  - good condition
  - slightly worn
  - good detail



detail

- Tall Processional Candle Holders with round base (2)**  
Code: 065  
Photo Code: 8489, 8490, 8491 .JPG
- 51 in. tall X 11 in. diameter at base; portable top: 23 inches tall
  - Est. Weight: 9 lbs total
  - white translucent plastic encasement is seen here with Christian symbol.
  - brass coloration
  - very good condition
  - may have had a "liquid candle" insert
  - rod sections are plain



detail

**Acolyte  
Processional  
Candle Holders (2)**

Code: 066

- Photo Code: 8510, 8511, 8512 .JPG  
 - 57 in. tall X 3.5 in. diameter of holder  
 - Est. Weight: 2 lbs  
 - no markings  
 - internal diameter for candle in glass container: 2.75- 3in  
 - brass coloration  
 - lightweight wooden shaft  
 - good condition  
 - moves freely



detail

**Wall Mounted  
Large Sanctuary  
Candle Holder (1)**

Code: 067

- Photo Code: 8492, 8493, 8494 .JPG  
 - 25 in. tall X 9 in. at widest point  
 - Est. Weight: 25 lbs  
 - brass coloration (solid brass? )  
 - excellent condition  
 - heavy weight  
 - **one** unit only



**Wall Mounted  
Display Case (1)**

Code: 068

- Photo Code: 8495, 8496, 8497, 8498, 8499 & 8500 .JPG  
 Estimate: 18 in. tall X 9 in. at widest point  
 - Est. Weight: 8 lbs  
 - **NOT** for candle use  
 - gold painted metal  
 - door with glass pane swings open (loose pane)  
 - red velvet interior  
 - made by parishioner and later refurbished (inscription on label)  
 - one unit only



detail

**Paschal Candle  
Holder with  
removable shaft (1)**

Code: 069

- Photo Code: 8501, 8502, 8503 .JPG  
 - 48 in. tall X 10 in. at base  
 - candle size: 2 in.  
 - removable top : 18 in. tall  
 - Est. Total Weight: 15 lbs  
 - no markings  
 - brass coloration  
 - wooden shaft  
 - good condition  
 - timeworn holder

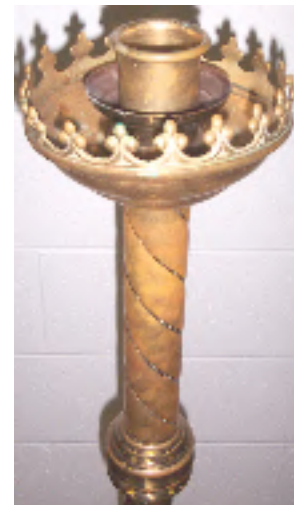


detail

**Paschal Candle  
Holder (1)  
single-piece  
construction**

Code: 070

- Photo Code: 8504, 8505, 8506 .JPG  
 - 50 in. tall X 9 in. diameter at base  
 - candle size: 2 in.  
 - Est. Weight: 20 lbs  
 - no markings  
 - no Christian symbols  
 - brass coloration  
 - excellent condition  
 - wax spatters visible  
 - solid construction



detail

**Paschal Candle  
Holder (1)  
single-piece  
construction**

Code: 071

- Photo Code: 8507, 8508, 8509 .JPG  
 - 47 in. tall X 11 in. diameter at base  
 - candle size: 2 in.  
 - Est. Weight: 20 lbs  
 - no markings  
 - brass coloration  
 - gracefully timeworn  
 - solid construction  
 - somewhat secular appearance





detail

*Our Lady of Good Counsel*

**Censer Stand plus Censer** (without incense holder) (1)  
Code: 072  
Photo Code: 8514, 8515, 8516, 8517 .JPG  
- 53 in. tall X 7 in. diameter at base  
- Est. Weight: 10 lbs total  
- brass coloration  
- thick upper design  
- censer has intact parts with movable lid  
- solid stand  
- gracefully worn appearance



detail

**Censer Stand plus Censer** (without incense holder) (1)  
Code: 073  
Photo Code: 8518, 8519, 8520 .JPG  
- 50 in. tall X 12 in. width at base  
- Est. Weight: 10 lbs total  
- brass coloration  
- censer has intact parts  
- censer shown in raised position  
- solid stand  
- gracefully worn appearance

Detail



**Censer without chain nor holding stand** (1)  
Code: 074  
Photo Code: 8587, 8588 .JPG  
- Estimated 7 in. tall X 6 in. width at midsection  
- Est. Weight: 3lbs  
- brass coloration  
- censer is missing chain, stand and finial  
- thumb-actuated lid release  
- incomplete artifact  
- worn by years of use



**Censer with chain** (1)  
Code: 075  
Photo Code: 8589, 8590 .JPG  
- 11 in. tall X 5 in. width at midsection  
- Est. Weight: 6 lbs  
- brass coloration  
- partial verdigris patina  
- censer is screwed shut with non-original steel screws.  
- there is no stand nor incense holder  
- inoperable unless screws are removed  
- solid construction  
- gracefully worn



**Incense Holder with original brass spoon** (1 set)  
Code: 076  
Photo Code: 8521, 8522 .JPG  
- Estimate 5.5 in. tall X 3 in. diameter base  
- Est. Weight: 10 oz.  
- brass coloration  
- delicate painted upper lid design  
- hinged lid  
- gracefully worn appearance



**Coal Tongs for Censer** (1)  
Code: 077  
Photo Code: 8523, 8524 .JPG  
- Estimate 5.5 in. length X 1 in. width  
- Est. Weight: 4 oz.  
- appears to be solid brass  
- gracefully worn appearance

Note: Additional Incense-related items continue at Code: 090



**Plain metal Candle Holders (2) with hexagonal base** Code: 078  
Photo Code: 8482 .JPG  
- 12 in. tall X 4 in. (at base)  
- Est. Weight: 3 lbs. each  
- no markings  
- no Christian symbols  
- two gold painted metal (faded with chips at base)  
- one dark metal



Detail: pole tip  
- accommodates an upper tube section

**Brass tube (hollow base) (1)**  
Code: 079  
Photo Code: 8525, 8526 .JPG  
- 48 in. tall X 1 in. at thickest width  
- Est. Weight: 8 oz.  
- appears to be brass  
- good condition  
- possible the lower section of a flag pole  
- male connector plug has a threaded center approx 3/8 in diameter  
- opposite end is open



**Monstrance (1) with Lunette & Fabric Cover** (lunette case included)  
Code: 080  
Photo Code: 8529 - 8537 .JPG  
- 30 in. tall X 13 in. wide  
- Est. Weight: 8lbs.  
- appears to be solid brass  
- very good condition  
- lunette plus case included  
- white satin(?) fabric shroud; ornate



Lunette



**Monstrance (1) with Lunette & Fabric Cover** (lunette case included)  
Code: 081  
Photo Code: 8538 - 85348 .JPG  
- 33 in. tall X 17 in. wide  
- Est. Weight: 7 lbs.  
- very good condition; cross reattached.  
- lunette plus case included (*Chi Rho*)  
- white satin(?) fabric shroud; *IHS*  
- inscript.: *Donated by the Young Ladies' Sodality 1908*  
- made by: F. Pustet & Co. NYC



**GIFT of SSPP parishioners: remains at the New St. Monica Church**



**Monstrance (1) with Lunette & Fabric Cover** (lunette case included)  
Code: 082 Photo Code: 8549 - 8554 .JPG, \_DSC0029, \_DSC0030.JPG  
- 24 in. tall X 14 in. wide  
- Est. Weight: 10 lbs.  
- gently worn condition  
- lunette plus case included (*IHS*)  
- white satin(?) fabric shroud  
- Symbols: Alpha & Omega, Dove & Trinity  
- "hand made" Switzerland (inscript.)



- shroud design decorated by sequins

*Our Lady of Good Counsel*



**Monstrance (1) with Lunette** (no lunette case)  
Code: 083  
Photo Code: 8557 - 8563 .JPG  
- 22 in. tall X 12 in. wide; base: 4 inches X 7 inches  
- Est. Weight: 8 lbs.  
- gently worn condition  
- highly ornate  
- loose front lens  
- no shroud



Lunette





**Monstrance (1) with Lunette**  
 (no lunette case) **plus shroud**  
 Code: 084  
 Photo Code: 8564 - 8572 .JPG  
 - 23 in. tall X 12 in. wide  
     base: 8 in. diameter  
 - Est. Weight: 8 lbs.  
 - ornate; good condition  
 - hand-painted satin shroud



Donated to Mexican mission staffed by a priest brother of a parishioner. Per: Fr. Ray Fleming. Photo available at its new home



**Monstrance (1) without Lunette**  
 (no lunette case)  
 Code: 085  
 Photo Code: 8573 - 8576 .JPG  
 - 9 in. tall  
     base: 4.5 in. diameter  
 - Est. Weight: under one lb.  
 - plain ; no case or shroud  
 - possibly a chapel monstrance  
 - design does not have a slot for the lunette.  
 - twist-off rear lunette display door.

*Our Lady of Good Counsel*



**Monstrance (1) without Lunette**  
**Form-fitting carrying case**  
 Code: 086  
 Photo Code: 8721 - 8723 .JPG  
 - 19 in. tall ;  
 - 6.5 in. diameter base  
 - Est. Weight: 2 lbs. (monstrance)  
     1.5 lbs. case  
 - plain ; good condition  
 - design does have a slot for a lunette. (no lunette available)



detail

**Wooden Lectionary Holder (1)**                      Code: 088  
 Photo Code: 8580 - 8582 .JPG  
 - 24in. X 12 inch base; 15 inch X 13 inch book surface  
 - Est. Weight: 6 lbs. ; does not adjust (approx 35-degree angle)  
 - inscription on plaque: "In Memory of Barbara Jo Pullman"



detail

**Wooden Frame (possible Lectionary Holder) (1)**  
 Code: 089  
 Photo Code: 8583 - 8584 .JPG  
 - 10 in. X 14 inch; Est. Weight: 1 lb. ; does not adjust





**Censer with 3 chains (1)**  
Code: 090  
Photo Code: 8594-8596. JPG

- 9 in. tall censer X 4.5 in. width at midsection
- Est. Weight: 4 lbs
- brass coloration
- chain height is 35 inches
- there is no stand nor incense holder
- solid construction
- gracefully worn
- no matching incense holder



**Censer with 1 chain (1)**  
Code: 091  
Photo Code: 8597-8598. JPG

- in. tall censer X 4.5 in. width at midsection
- Est. Weight: 4 lbs
- brass coloration
- chain height is 41 inches
- there is no stand nor incense holder
- solid construction
- upper half of globe is hinged
- push button actuation of upper hinge movement
- no matching incense holder
- corroded object at right holds coals inside censer.



**Censer with 1 chain (1)**  
Code: 092  
Photo Code: 8599-8600. JPG  
- 6 in. tall censer X 4 in. width at midsection  
- Est. Weight: 2 lbs  
- brass coloration  
- chain height is 39 inches  
- there is no stand nor incense holder  
- solid construction  
- upper half of globe pulls upward with knob  
- no matching incense holder

**Incense Holder (1)** Code: 093  
Photo Code: 8604-8606. JPG  
- 3.5 in. tall X 3 in. across X 6 in. long ; Est. Weight: 5 ounces  
- brass-colored plating is almost completely worn away  
- hinged lid; solid construction; no matching spoon



**Incense Holder (1)** Code: 094 Photo Code: 8607. JPG  
- 3 in. tall X 2.5 in. across X 6 in. long  
- Est. Weight: 1 lb.  
- possibly solid brass  
- hinged lid; solid construction  
- no matching spoon



*Our Lady of Good Counsel*

**Incense Holder (1)** Code: 095 Photo Code: 8608-9. JPG  
2.75 in. tall X 3 in. diameter Est. Weight: 10 ounces  
- brass coloration  
- hinged lid; intact; no matching spoon.



*Our Lady of Good Counsel*



**Note: Code Number change here: No # 96-101**

**Holy Water Fonts** (1 set of 2) Code: Code 102 Photo Code: 8613.JPG ; 13 in. tall X 8 in. across Est. Weight: 8 lbs. total (2 units)  
 - possibly solid brass, about .25 in. thick ; wall screws included  
 - verdigris coloration around removable fonts; good condition  
 - inscribed: "1951-52 Holy Name Men"



**Holy Water Fonts** (1 set of 2) Code: 103  
 Photo Code: 8614.JPG ; 10 in. tall X 5.25 in. across  
 - Est. Weight: 7 lbs. total (2 units)  
 - possibly solid brass, about .25 in. thick ; removable glass fonts;  
 - very good condition; no inscription; holes for screws



**Holy Water Font** (1 of 1) Code: 104 Photo Code: 8619.JPG  
 - 8.5 in. tall X 5.5 in. across Est. Weight: 1 lb. total (2 parts)  
 - brass coloration for shell ; removable shell ; - good condition;  
 - no inscription; hole for screws; wood holder.



wood holder  
turned on  
side; shell  
detaches

**Holy Water hand-held sprinkler** Code: 105 (one only)  
 Photo Code: 8620.JPG ; sturdy  
 - 11.5 in. tall X 2 in. across Est. Weight: 1 lb. total (solid);  
 - brass coloration ; distressed appearance - no inscription



**Sacristy Bell** Code: 106 (one only) Photo Code: 8621.JPG  
 - 9 in. tall X 5.5 in. across Est. Weight: 7 lbs. total (solid)-  
 - appears to be solid brass ; excellent condition; cord actuated;  
 - no inscription



**Consecration Bells** Code: 107 (one only) Photo Code: 8624. & 86235.JPG ; solid construction; 4 bells; good but worn condition  
 - 6 in. tall X 7 in. across ; bell diameter: 2 in. Est. Weight: 2.5 lbs.  
 - no inscription ; brass coloration ;



detail



*Our Lady of Good Counsel*

**Consecration Bells** Code: 108 (one only) Photo Code: 8627. & 8628.JPG ; solid construction; 3 bells; good but well worn condition; brass coloration completely worn away; no inscription - 4.5 in. tall X 6 in. across; Est. Weight: 1.5 lbs.



detail

**Consecration Bells** Code: 109 (one only) Photo Code: 8629. & 8631.JPG ; solid construction; 4 bells; good but well worn condition; possibly solid brass- 5.5 in. tall X 8.5 in. across; - Est. Weight: 2.5 lbs.- no inscription



detail

**Consecration Bells** Code: 110 (one only) Photo Code: 8633. & 8634.JPG ; solid construction; 3 bells; good but very worn condition; possibly solid brass; 5.5 in. tall X 8.5 in. across; - Est. Weight: 1.5 lbs.; - no inscription



detail

**Hand-held Painted Metal Bell** Code: 111 (one only) Photo Code: 8635. & 8636.JPG ; solid construction; 1 ringer; good condition but mildly stressed; possibly solid brass - 3.75 in. tall X 3 in. across; Est. Weight: under one lb.; - no inscription



detail

**Vertical Attached Bells with loop at top** Code: 112 (one only) Photo Code: 8641. & 8643.JPG ; vertical arrangement; good condition; aged appearance; possibly solid brass- 4.5 in. tall X 1.5 in. across; Est. Weight: under one lb.; - no inscription



detail

**Ciborium set** Code: 113 (three total) Photo Code: 8640.JPG ; \_DSC0034.JPG - bright blue paint on brass-colored and dimpled surface; virtually new; 9 in. tall X 5in. diameter cup; - Est. Weight: under 2 lb. each ; - no inscription



*Our Lady of Good Counsel*





**Ciborium** Code: 114  
 Photo Code: 8644.JPG ;  
 brass coloration; solid construction; uniformly worn surface ; cross on top lid; moderately ornate; “inverted shamrock” bordering  
 - 12.5 in. tall X 4.25in. diameter base;  
 - Est. Weight: one lb.  
 - inscription: Sterling silver  
 -Other photo: 8643.JPG



**Ciborium** Code: 115  
 Photo Code: 8645.JPG ;  
 silver appearance; rim is slightly damaged but fixable; very worn surface ; cross on top lid;  
 - 10 in. tall X 4.75in. diameter base;  
 - Est. Weight: 1 lb.  
 - inscription: “To Rev. J.P. Brophy by Mrs.Kotz , Utica, NY” (no year listed)  
 - Other Photos: 8646, 8647 and 8648 .JPG



**Ciborium** Code: 116  
 Photo Code: 8649.JPG ;  
 - Upper lid and base appear to be brass; the cup's surface is completely worn;  
 - sturdy ; cross on top lid;  
 - 12 in. tall X 6.5in. cup diameter; sturdy  
 - Est. Weight: 1.5 lb.  
 - no inscription:  
 - Other Photo: 8650 .JPG



**Ciborium** Code: 117  
 Photo Code: 8651.JPG ;  
 - Upper lid and base have a gold coloration; the cup's surface is well worn;  
 - simple design;  
 - sturdy ; cross on top lid;  
 - 11.5 in. tall X 6.5in. diameter base; sturdy  
 - Est. Weight: 1.5 lb.  
 - no inscription:  
 - Other Photo: 8652 .JPG



**Ciborium** Code: 118  
 Photo Code: 8654.JPG ;  
 - gold coloration was worn away lovingly; ruby-colored stones at stem grip; sturdy ; cross on top lid;  
 - 13 in. tall X 6.5in. diameter base;  
 - Est. Weight: 1.5 lb.  
 - Inscription: *presented to St. Mary's Church by Helena Dicks 3/25/32 ; "Quoniam abscondit me in tabernaculo suo"*  
 - Other Photo: 8655 .JPG



**Ciborium** Code: 119  
 Photo Code: 8673.JPG ;  
 - well-worn gold coloration; simple design; sturdy ; cross on top lid;  
 - 10 in. tall X 4in. at hexagonal base;  
 - Est. Weight: 1 lb.  
 - Inscription: *In memory of Mrs. Timothy D. Rowland*  
 - Other Photo: 8674 .JPG

*Our Lady of Good Counsel*



**Ciborium** Code: 120  
 Photo Code: 8676.JPG ;  
 - well-worn gold coloration;  
 simple design; distressed  
 base; sturdy ; cross on top  
 lid;  
 - 9 in. tall X 4in.  
 at circular base;  
 - Est. Weight: less than  
 1 lb.  
 - Inscription: *none*  
 -Other Photos: 8675 .JPG  
 8677. JPG



**Concelebration Ciborium** Code: 121  
 Photo Code: 8678.JPG ;  
 - silver coloration; simple design;  
 separates to form two Eucharistic cups;  
 cross on top lid; 7 in. tall X 4.5 in.  
 at circular base;  
 - Est. Weight: 1 lb.  
 - Inscription: *"quadruple plate;  
 P & S Co." "4 S O"*  
 - Other Photo: 8679 .JPG



detail

**Celebrant's Eucharistic Cannister** Code: 122

Photo Code: 8680.JPG , 8681 .JPG;  
 - silver coloration; simple design; one chamber; cross on top;  
 6.75 in. tall X 3.75in. at circular base; Est. Weight: 1.5 lb.  
 - Inscription: *"hard white metal"; "E.G. Webster & Son, NY"*



detail

**Celebrant's Eucharistic Cannister** Code: 123

Photo Code: 8682.JPG, 8683 .JPG;  
 - dull silver coloration; simple design; one chamber; cross  
 on top; 5.25 in. tall X 4.25in. at circular base; Est.  
 Weight: 1. lb. ; Inscription: *"John P. Daleide, Chicago, Il"*



detail



**Cannister** Code: 124  
 Photo Code: 8684  
 .JPG, 8685.JPG  
 - bright stainless steel;  
 - one chamber;  
 - possibly a secular  
 item;  
 - 7.25 in. tall X 6 in.  
 at circular base;  
 - virtually new  
 condition  
 - Est. Weight: 2.5 lbs.  
 - Inscription: *"Polar  
 Stainless Steel" ; S-3*

**Celebrant's Eucharistic Cannister** Code: 125

Photo Code: 8686.JPG, 8687 .JPG;  
 - silver coloration; simple design; one chamber; cross on top;  
 4 in. tall X 3.25in. at circular base; Est. Weight: 1. lb. ;  
 - Inscription: *none*



*Our Lady of Good Counsel*





**Chalice** Code: 126 Photo Code: 8690, 8691, 8692, 8693.JPG;  
 - 9.25 in. tall X 6.75 in. at base; possible diamond at base; ornate stem; sturdy  
 Est. Weight: less than 1 lb.;  
 - Inscription: *'Oblatio sanguinis Domini cotidiana in nunc calicem effusi parentibus meis prosit in fructum sacrificii sui. Carolus G. Langworthy sacerdos factus die.*

*Our Lady of Good Counsel*



**Ciborium with case**  
 Code: 127 Photo Code: 8694, 8695, 8696,.JPG;  
 - case 11 in. tall X 5.75 in. at base; brass appearance; worn with great care; exterior metal surface almost completely worn away; sturdy; deep purple "velvet" fabric. Paten may be from different set. Original case.  
 - Est. Total Weight: 5 lb.;  
 - Inscription: *none*

*Our Lady of Good Counsel*



**Chalice with case; paten included**  
 Code: 128 Photo Code: 8697, 8698, 8699,.JPG;  
 - Chalice: 8.75 in. tall X 6 in. at base; uniformly worn surface; sturdy; moderately ornate. dark green fabric; original case.  
 - Est. Total Weight: 5.5 lb.;  
 - Inscription: *none*

*Our Lady of Good Counsel*



**Chalice with case; paten included**  
 Code: 129 Photo Code: 8700, 8701, 8702.JPG;  
 - Chalice: 8.75 in. tall X 5 in. diameter at base;  
 - uniformly worn surface; sturdy; simple design; red fabric; original case.  
 - Est. Total Weight: 5 lb.;  
 - I nscription: *none*



**Chalice with case; paten included**  
 Code: 130 Photo Code: 8703, 8704, 8705.JPG;  
 - Chalice: 8.75 in. tall X 5 in. diameter at base;  
 - uniformly worn surface; sturdy; simple design; purple fabric; original case.  
 - Est. Total Weight: 5 lb.;  
 - Inscription: *none*



**Chalice** (no case; no paten)  
 Code: 131 Photo Code: 8706, 8707, 8708. 8709, 8710.JPG;  
 - Chalice: 9.25 in. tall X 6.5 in. diameter at base; appears to have very small rubies and small precious stones inlaid.  
 - uniformly worn surface;  
 - ornate; sturdy;  
 - Weight: 2.5 lb.;  
 - Inscription: *" J. Piana; Sterling 925 1000"*



**Chalice** (no case; no paten) Code: 132  
Photo Code: 8711, 8712 .JPG;  
- Chalice: 9.25 in. tall X 5.25 in. at base;  
- uniformly worn surface; simple design  
- sturdy;  
- raised cross design at base  
- Weight: 2 lb.;  
- Inscription: " *Gorham Silver 4451* "

*Our Lady of Good Counsel*



**Chalice** (no case; no paten) Code: 133  
Photo Code: 8713, 8714, 8715 .JPG;  
- Chalice: 8.75 in. tall X 5 in. at base;  
- mottled worn surface; simple design ; sturdy; 'heavy'; appears to have inlaid diamond at base  
- Weight: 3 lb.;  
- Inscription: " *Sterling 1800* "



**Chalice** (no case; no paten) Code: 134  
Photo Code: 8716, 8717, 8718 .JPG;  
- Chalice: 8.25 in. tall X 5.25 in. at base;  
- gracefully worn surface; simple design ; sturdy;  
- Weight: 1.5 lb.;  
- Inscription: *In Memory of Bernard J. Kelly; "Ithaca Assembly, Fourth Degree Knights of Columbus ,Ithaca NY";. Louis I.Meyer, Inc.*  
- Sterling silver stamped at cup



**Chalice** (no case; no paten) Code: 135  
Photo Code: 8719, 8720.JPG;  
- Chalice: 8.25 in. tall X 4.75 in. at base;  
- uniformly worn surface;  
- simple design ; sturdy;  
- Weight: 1.5 lb.;  
- Inscriptions:  
"Presented by the nieces and nephews"  
"In Memory of Aunt Clara M. Hohm"



**Chalice** (no case; no paten) Code: 136  
Photo Code: 8724, 8725.JPG;  
- Chalice: 7.5 in. tall X 5 in. at base;  
- slightly worn surface; simple design ; sturdy;  
- raised cross detail at base;  
- two small "dings" at stem.  
- Weight: 1.5 lb.;  
- Inscription: none



**Ciborium** Code: 137  
Photo Code: 8726, 8727.JPG;  
- 9.75 in. tall X 4.75in. at base; uniformly worn surface; simple design ; sturdy; cross at top of well-fitting lid;  
- Total Weight: 1.5 lb.;  
- Inscription: none





**Ciborium** Code: 138  
 Photo Code: 8728,  
 8729, 8230.JPG;  
 - 10 in. tall X 5.25in.  
 at base;  
 very good condition;  
 ornate "wheat" design ;  
 sturdy; ornate cross at top  
 of well-fitting lid;  
 - Total Weight: 1.5 lb.;  
 Inscription: *"In memory of  
 Nora McNally"*



**Chalice** ( no case, no paten)  
 Code: 139  
 Photo Code: 8731,  
 8232.JPG;  
 - 9 in. tall X 5.5in. at base;  
 - moderate wear; Sturdy  
 - Weight: 2.5 lb.;  
 - Inscription: *"In Memory of  
 Rev. Robert J. Fox"* (pastor of  
 Ss. Peter & Paul Church in  
 1950s & early '60s)

*Saints Peter & Paul Church*



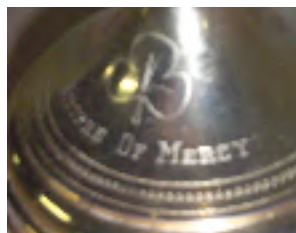
**Chalice** ( no case, no paten)  
 Code: 140  
 Photo Code: 8733, 8234.JPG;  
 - 9 in. tall X 5.25in. at base;  
 - light to moderate wear.  
 - sturdy  
 - Weight: 1.5 lb.; Inscriptions:  
*"Gift of Catherine M. Appleby  
 & Family 1943";  
 "Gorham Sterling 4464"*



**Chalice** ( no case, no paten)  
 Code: 141  
 Photo Code: 8735, 8236,  
 8238.JPG;  
 - 8 in. tall X 5.5in. at base;  
 - light to moderate wear; sturdy  
 ornate cross at base; "heavy"  
 - Weight: 2.5 lb.;  
 - Inscription: *"In Memory of  
 Louise Wibbenmeyer"*



**Ciborium** Code: 142  
 Photo Code: 8739,  
 8740, 8241, 8742.JPG;  
 - 11 in. tall X 4.75in.  
 diameter at base;  
 - good condition; cross at top of  
 well-fitting lid;  
 - Total Weight: 1.5 lb.;  
 - Inscription: *"Sisters of Mercy"*  
 with shamrock; no year



detail

**Communion Bread Plate** Code: 143 Photo Code: 8743,  
 8744.JPG; - 0.75 in. tall X 6.25 in. diameter;  
 - very good condition; recessed center; upper surface  
 has a gold coloration; the lower has a silver appearance.  
 - Weight: less than 1 lb.; Inscription: none



**Communion Bread Plate** Code: 144 Photo Code: 8745, 8746.JPG;

- 0.5 in. height X 5 in. diameter; has a very ornate "IHS" symbol inscribed ; slightly worn surface; recessed center
- it has a silver appearance.
- Weight: less than 1 lb.; Inscription: "IHS"



**CommunionCups (two)** Code: 145 Photo Code: 8747, 8748.JPG;

- 7 in. tall X 3.5in. cup diameter; virtually new condition; has a darkened bronze appearance; solid metal;
- fluted cup sides; Total Weight: 2 lb.; Inscription: none



**Small Tabernacle Crucifix** Code: 146

Photo Code: 8749, 8750, 8751.JPG;

- 11.75 in. tall X 4.75in. width at base;
- very good condition;
- very bright appearance;
- fine details
- Est. Weight: 4 lbs.;
- Inscription: none

**Communion Bread Plate** Code: 147 Photo Code: 8752, 8753.JPG;

- 1.5 in. height X 9 in. diameter;
- simple design with bright silver appearance
- has silver-colored "sea shells" attached; very good condition
- Est. Weight: 2 lb.; Inscription: none



**Communion Bread Plate** Code: 148 Photo Code: 8754, 8755.JPG

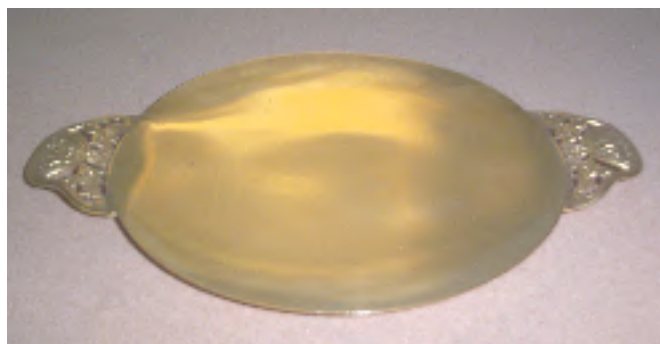
- 0.5 in. height X 6 in. diameter;
- uniformly worn surface; gently aged ; detailed rim;
- Est. Weight: under 1 lb.;
- Inscription: "Prelude International Sterling"



**Altar Server's Communion plate :** Code: 149

Photo Code: 8756, 8757, 8758.JPG;

- 0.5 in. height X 10 in. width; virtually new condition
- has a brass appearance ; "IHS" motif on handles
- Est. Weight: under 1 lb.; - Inscription: none



*Our Lady of Good Counsel*





**Combined Eucharistic Cup & Bread Plate**

Code: 150

Photo Code: 8759, 8760, 8761.JPG;

- 4 in. tall X 6.5in. diameter at base;
- aged surface; cup rests atop spindle post
- Est. Weight: 1 lb.;
- Inscription: none



detail

*Our Lady of Good Counsel*



**Combined Eucharistic Cup & Bread Plate**

Code: 151

Photo Code: 8762, 8763, 8764.JPG;

- 5 in. tall X 6.5in. approx diameter at base; modernistic.
- gold interior & silver exterior
- cup rests atop spindle post
- Est. Weight: 3 lb.;
- Inscription: none



detail

**Altar Server's Communion plate with long handle:**

Code: 152

Photo Code: 8765, 8766.JPG;

- 1 in. height X 7 in. diameter X 14.75 length;
- virtually new condition ;
- Est. Weight: under 1 lb.;
- Inscription: none



*Our Lady of Good Counsel*



**Small Metal Pitcher**

Code: 153

Photo Code: 8790, 8791.JPG;

- 4.75 in. tall X 5 in. width at handle and 2.75 in. diameter at base;
- has a silver appearance
- Est. Weight: 3 lb.;
- Inscription: "Westinghouse"

**Paten with Bursa:**

Code: 154

Photo Code: 8792, 8793.JPG;

- Paten: 6 in. diameter ; good condition
- has a brass appearance
- Est. Weight: under 1 lb.
- Inscription: none



detail

**Cruets and tray holder**

Code: 155

Photo Code: 8794, 8795.JPG;

- 5.75 in. tall ;
- plate: 5.75 in. width X 9 in. length
- aged brass top with cross; glass plate
- Est. Weight: 1.5 lb.;
- Inscription: none ; cut glass or crystal



*Our Lady of Good Counsel*



**Cruets and tray holder**  
 Code: 156 Photo Code: 8796, 8797.JPG;  
 - 6 in. tall ;  
 - Estimate: 5.75 in. width X 9in. length  
 - glass cruets, stoppers & plate (original items)  
 - Est. Weight: 1.5 lb. ;  
 - Inscription: cross ;  
 - cut glass or crystal



detail

**Cruets and tray holder** Code: 157 Photo Code: 8798, 8799.JPG;  
 - 5.5 in. tall ; tray: 6 in. X 9 in. ; glass cruets with plastic stoppers  
 - plate: weathered verdigris surface; brass appearance  
 - Est. Weight: 1 lb. ; Inscription: none



**Cruets and tray holder** Code: 158 Photo Code: 8802, 8803.JPG;  
 5.5 in. tall ; tray: 6 in. X 9 in. ;  
 - glass cruets with plastic stoppers  
 - Est. Weight: 1 lb. ; Inscription: none



**Cruets and tray holder** Code: 159 Photo Code: 8804, 8805, 8806.JPG;  
 7 in. tall ; tray: 5.5 w, in. X 9 in. l. ;  
 - ornate glass cruets with gold-colored metal lids;  
 - form-fitting recessed base for cruets. Est. Weight: 1 lb.  
 Detail: "A" (aqua) water and grapes (wine)



*Code 160 (leave blank)*

*Code 161 (leave blank)*





### **Stations of the Cross: from Our Lady of Good Counsel**

Code: 162 Photo Code: 8810, 8808, 8809, 8810, 8813, 8814, 8815, 8816, 8817, 8818, 8820, 8821, 8824, 8825, 8826 .JPG;

### **Wood Carving; “washed” appearance to muted colors.**

Wall mounted with separate small wooden cross with Roman numerals

- Tallest depiction is **21 inches** tall  
and the base widths average **15 inches**

- Estimated Weight: about **6 pounds each**

- Framed letter available certifying their initial installation in **1931**.  
8828, 8829.JPG signed by the Bishop of Rochester, NY

**Small Chapel Ceramic Stations of the Cross:**

Code: 163 Photo Code: 8830, 8831, 8832, 8833, 8834, 8835, 8836, 8837, 8838, 8839, 8840, 8841, 8842, 8843.JPG

**Ceramic light tan-colored background wth sepia-toned shading.**

Wall mounted with separate small wooden cross with Roman numerals atop each station (several damaged or missing; replaceable).

- Tallest depiction is **14 inches** tall and the base widths average **8 inches**
- Estimated Weight: about **2.5 pounds each**

(may have been in a convent or rectory chapel)







**Small Stations of the Cross suitable for a chapel setting:**

Code: 164 Photo Code: 8844, 8846, 8847, 8848, 8849, 8850, 8851, 8852, 8853, 8854, 8855, 8856, 8857, 8858.JPG  
(station depictions were photographed at an angle to minimize photo flash glare)

**Immediate Foreground:** raised-surface darkened bronze-colored metal images on a center-mounted 2 in X 2 inch plaque with Roman Numerals.

**Background:** Solid dark wood .75 in thick mounting surface (possibly walnut)

**Foreground:** Lighter-colored wood cross (possibly oak)

**Border dimensions:** 6.75 X 6.75in. Wall mounted.

**Estimated Weight:** about 2 lbs.each

(may have been in a convent or rectory chapel)









**Large Stations of the Cross suitable for a church setting:**

Code: 165 Photo Code: 8865, 8866, 8867.JPG

- three of fourteen photographed only; two shown here.

**Central Foreground:** raised-surface plaster or ceramic images

**Background:** painted wood frame (heavy, solid and durable)

**Finial Cross** (painted plaster or ceramic) detaches.

**Dimensions:** 36 in. tall (base to tip of cross) ; 26 on. wide

**Estimated Weight:** about 20 lbs.each

**Wall Mounted**

*Full Series of the St. Augustine Church Stations of the Cross  
by Royal Chamberlain*

*Photo Codes: \_DSC0004.JPG through \_DSC0020*



Two different lighting levels used here to show contrast and detail.

Actual Stations have uniform coloration.

*( from St. Augustine R. C Church,  
Rochester, New York )*





**Ornate Metal Display stand** Code: 166  
Photo Code: 8859, 8861, 8862, 8863, 8864.JPG;  
- 29 in. tall X 17 in. width at widest point; brass coloration over a light-weight metal.  
- faux marble surface  
- Est. Weight: about 10 lb.;  
- Inscription: none



detail of upper surface



accommodates 11.5 in. diameter holy water urn

**Holy Water Stand and Lid** (urn not available) Code 167  
Photo Code: 8891, 8892, 8893.JPG  
**Base** component: 28 in. tall; 19 inches at mid-section and base.  
**Lid:** all-metal construction with finial cross; mildly distressed  
- Estimated Total Weight: 9 lbs.  
- heavy gauge steel painted in a bronze color. (both units)



**Holy Water Stand and Lid** (urn not available) Code 168  
Photo Code: 8895.JPG  
**Base** component: 29.75 in. tall; 13 inches diameter; small amounts of rust on inside  
**Lid:** all-metal construction with bronze-appearing metal finial cross; lid appears to be stainless steel  
- Estimated Total Weight: 9 lbs.  
- heavy gauge steel painted in a gray color.

accommodates 11.5 in. diameter holy water urn

*Our Lady of Good Counsel*



same unit

**Padded Kneeler ( 3 units )** Code 169  
Photo Code: 8896, 8897, 8898.JPG  
- Solid all-wood construction with internal bookshelf.  
- padded kneeler with purple fabric  
- virtually new condition  
- 32.5 in. tall; 22 in wide ; 22 in depth at kneeler's rear edge  
- Estimated weight: 20 lbs.



**Padded Kneeler ( 1 unit )** Code 170  
Photo Code: 8899, 8901.JPG  
- All wood construction with internal bookshelf.  
- dark wood appearance  
- purple fabric padded kneeler and upper surface  
- good condition with moderate wear  
- 33 in. tall; 22.5 in wide; 21 in. depth at kneeler's rear edge  
- Estimated weight: 20 lbs.



**Wide Padded Kneeler ( 1 unit )** Code 171  
Photo Code: 8906, 8908 and 8909.JPG  
- All wood construction with internal bookshelf.  
- a "wood grain" staining was applied over painted wood  
- purple fabric padded kneeler and upper surface  
- good condition with moderate wear ; solid  
- 35 in. tall; 38 in wide; 21 in. depth at kneeler's rear edge  
- Estimated weight: 25 lbs.



**Sanctuary Chairs ( 3 units)**  
Code 172

Photo Code: 8910 , 8912,  
8913.JPG

- Set of 3
- Solid wood construction
- Virtually new condition
- cushion has zip-out removable padding)
- 36.5 height x 27 in. width x 21 in. depth
- Estim. weight each: 20 lbs,



seat pad detail



**Sanctuary Chairs ( 2 units)**  
Code 173

Photo Code: 8914 , 8915 .JPG  
8913

- Set of 2
- Solid wood construction
- Virtually new condition
- cushion is attached
- 36.5 height x 37 in. width x 21 in. depth
- Estim. weight each: 15 lbs,



**Tabernacle** Code 174

Photo Code: 8916 , 8920 .JPG

- brass appearance inside and out. Unattached.
- white fabric interior; virtually new condition

- locking hinged door has keys
- 24 in. tall x 13 in. outside diameter; Estim. Weight: 20 lbs



Inscribed:  
*In loving  
memory of  
Joseph  
Ottalagana  
- Our Lady  
of Good  
Counsel*

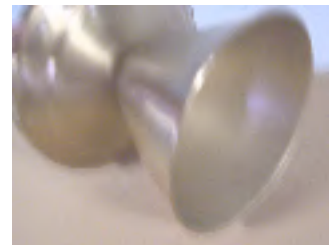
detail



**Small Pedestal ( 1 )** Code 175

Photo Code: 8921 , 8923 .JPG

- brass appearance inside and out.
- possibly anodized surface
- upper flat surface is wood-grained Formica (tm) on heavy wood backing. Virtually brand new.
- 10 in. tall ; 12 in. diameter top
- Estim. weight: 6 lbs



same unit tilted to  
show hollow base



**Ecclesial Voting Ballot Receptacle  
with lockable lid** Code 176

Photo Code 8925, 8926, 8927, 8928,  
8929 .JPG

Brass appearance; ornate *IHS* with  
grape vine detail added

- A tab with a hole extends at the top rim to allow a lockable lid; padlock (but no key) is available.
- for dry contents only.
- 25 in. tall x 10 in. interior diameter; internal depth is 10 in.; 8.5 in. dia. at base. Estim. weight: 12 lb



detail of tab  
for securing lid  
with padlock



*Our Lady  
of Good  
Counsel*

**Cross of Jerusalem** Code: 177 Photo Code:\_ DSC0040.JPG

- approx 6 in. X 6 in.
- Est. Weight: under 1 lb. ; Inscription: ?

**Rectory at new St. Monica**





detail with doors open

### Eucharistic Reservation Tabernacle and Altar

Code 178 Photo Code: 8930, 8932, 8933, 8935.JPG , \_DSC0013 , \_DSC0014, \_DSC0015.JPG -

- Reservation Table with Tabernacle: 67 in. tall
- Altar top: 42 in. width x 24 in. depth
- Tabernacle: 13 in. ht. x 19 in. width x 11 in.
- The tabernacle mounts firmly to the table.
- Dimpled metal has *Loaves & Fishes* and *Paschal Lamb* depictions.
- Metal interior has a bright gold appearance.
- Complete altar plus tabernacle Estimated Weight: 50 lbs.

*Our Lady of Good Counsel*



### Baptismal Font

Code 179

Photo Code: 8937, 8938 , 8939, 8940.JPG

- base unit made of 1 in. thickness particle board with an "oak" Formica (tm) veneer.
- The clear plastic basin is removable.
- Formica veneer needs re-gluing at rear.
- *Holy Spirit* motif.
- Basin: 18.75 in. dia. ; 3.75 in. bowl depth
- 42 in. height x 25in. across;
- Estimated weight: 50 lbs. (heavy)
- Inscription: "*Gift of Walter Meisenzahl*"



interior view

*Our Lady of Good Counsel*



With cloth front in place



### Wooden Lectern

Code 180

Photo Code: 8941, 8943 & 8944

- side panels 1.5 in. thick
- sturdy; slightly worn bookshelf and upper surface
- removable curtain rod.
- has metal mount on front for a microphone cable neck.
- 45 in. tall x 22 in top width x 14.75 depth
- Estimated weight: 35 lbs.



**Baptismal Font Lid**  
Code 181  
Photo Code: 8946, 8947  
- metal lid with finial cross appear to be bronze; beneath lid is a thick wooden disc with a vertical axle permitting lid to swing laterally.



Note: There is no corresponding font (base)  
- 15in. tall (from tips of cross & axle)  
x 21 in. diameter  
- Estimated weight: 17 lbs.

**Statuary : Christ with Crown of Thorns and Sorrowful Mother**

Code 182 Set of Two Photo Code: 8948, 8949.JPG  
- statuary heads (11" in tall X 7 in width x 4.5in. base each)  
- silver-painted plaster; slightly distressed.  
- Estimated weight: 1.5 lbs each Inscription: none



**Statue of St. Martin de Porres**  
Code 183  
Photo Code: 8951, 8952. JPG

- plaster statue in very good condition.

25.5 in. tall x 9 in. at widest  
- Estimated weight: 10 lbs.

*From St. Augustine Parish*

Note: This statue remains at New Saint Monica Church



**Statue of the Good Shepherd** Code 184  
Photo Code: 8953, 8954.JPG

- plaster statue in good condition  
- minor chips;  
- intact small features.  
- facial features and hands are undamaged  
- 20 in. tall x 8 in. at widest;  
- base: 4.25 X 4.5 in.  
- Estimated weight: 5 lbs.



detail:  
paint missing



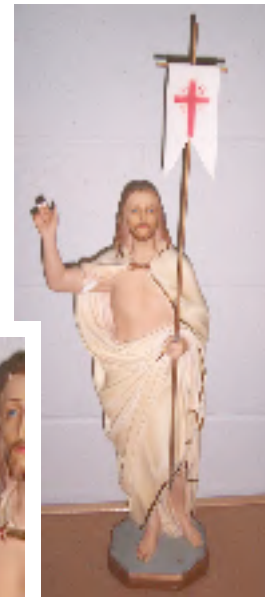
**Statue of the Sacred Heart** Code 185  
Photo Code: 8955, 8956, 8957.JPG

- plaster statue in good condition but needs slight paint restoration  
- plaster is undamaged  
- intact small features.

- 22 in. tall x 7 in. at widest;  
- base: 6.5 in. x 6.5 in.  
- Estimated weight: 7 lbs.



detail



**Statue of the Risen Christ** Code 186  
Photo Code: 8958, 8959.JPG

- plaster statue needs restoration of detachable arm segment;  
- airbrushing technique used likely to achieve lifelike effect  
- staff and metal banner detach  
- 27 in. tall at tip of banner x 7 in. at widest;  
- base: 6.5in. x 6.5 in.  
- Estimated weight: 3 lbs.





detail



**Table top Statue of St. Martin de Porres**

Code 187  
Photo Code: 8961, 8962. JPG

- plaster; distressed appearance with chipped paint at key facial features
- 13.5 in. tall x 5 in. at widest
- base: 3.25in. x 3.25 in.
- Estimated weight: 2 lbs.



**Courtyard Statue of St. Elizabeth Ann Seton**

Code 188  
Photo Code: 8963, 8964 & 8965.JPG

- appears to be cast concrete with a grainy surface
- minor chips noted at clothing
- 23 in. tall x 9 in. at widest;
- base: 6.5in. x 6.5 in.
- Estimated weight: 35 lbs.

*St. Augustine Church*  
large-sized statue series begins here. (stylistically similar). Beware identical photo codes with Our Lady of Good Counsel grouping



**St. Augustine statue:** for display in a church setting.  
Code 189 Photo Code: \_ DSC0024.JPG  
(dimensions not recorded; at least 3/4 life-sized)

*from  
St. Augustine church*



**Our Lady Queen of Peace statue:** for display in a church setting.  
Code 190 Photo Code: \_ DSC0003.JPG  
(dimensions not recorded; at least 3/4 life-sized)



**Saint Theresa of Lisieux** (*the Little Flower*):  
for display in a church or chapel setting.  
Code 191      Photo Code: \_ DSC0001.JPG  
(dimensions not recorded; at least 3/4 life-sized)



**Saint Joseph statue:** for display in a church or chapel setting.  
Code 192      Photo Code: \_ DSC0026.JPG  
(dimensions not recorded; at least 3/4 life-sized)



**Sacred Heart statue** for display in a church or chapel setting.  
Code 193      Photo Code: \_ DSC0029.JPG  
(dimensions not recorded; at least 3/4 life-sized)



*all from  
St. Augustine  
church*

**Saint Anne statue** for display in a church or chapel setting.  
Code 194      Photo Code: \_ DSC0028.JPG  
(dimensions not recorded; at least 3/4 life-sized)





**Christ in the Arms of His Mother** (*Pieta* style)  
 Code 195 Photo Code: \_ DSC0027.JPG  
 (dimensions not recorded; at least 1/3 life-sized)  
*St. Augustine*



*from  
 St. Augustine  
 Church*

**Mary Queen of Heaven statue** Code 196  
 Photo Code: \_ DSC0025.JPG, 9868.JPG  
 (dimensions not recorded; at least 1/3 life-sized)

at right side altar at New St. Monica Church

*Our Lady of  
 Good Counsel*  
 large-sized  
 statue series  
 begins here.  
 (stylistically  
 similar).  
 Beware  
 identical  
 photo codes  
 with St.  
 Augustine  
 Church  
 grouping

Compare this  
 set with the  
*Stations  
 of the Cross*  
 on page 29



**St. Joseph with the Child Jesus statue** Code 197  
 Photo Code: \_ DSC0006 , \_ DSC0007 .JPG  
 Total Height: 5 ft. tall ; wood; mounted on wall



**Sacred Heart of Jesus statue** Code 198  
 Photo Code: \_ DSC0018, \_DSC0019.JPG  
 Total Height: 5 ft.; wood; mounted on wall

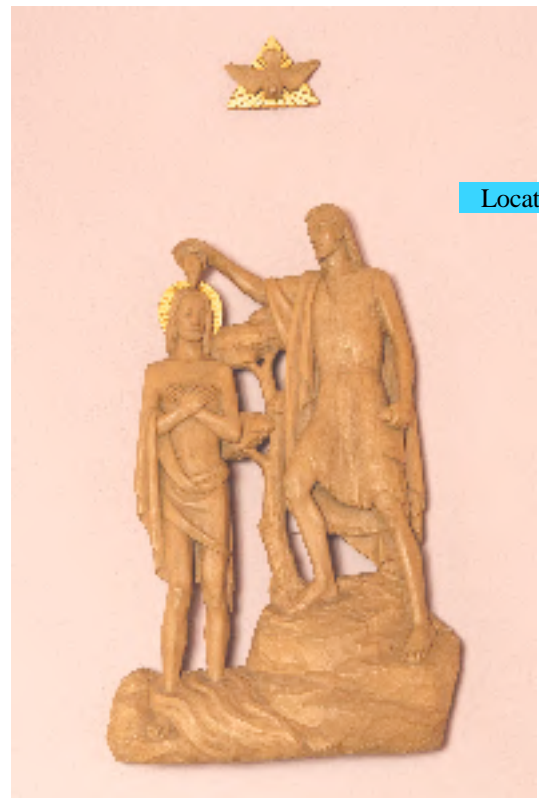
Large-sized  
wood statue  
series  
(three)  
ends here



from  
*Our Lady  
of Good Counsel*

**Blessed Mother with the Child Jesus statue** Code 199  
Photo Code: \_DSC0021 , \_DSC0022.JPG  
Total Height: 5 ft. tall ; wood; mounted on wall

Location?



**Baptism of Jesus tableau** Code 200  
Photo code: \_DSC0003.JPG wall-mounted  
3 ft. tall x 15 inches (approx) width; wood  
*Our Lady of Good Counsel*



from SS.  
*Peter &  
Paul  
Church*

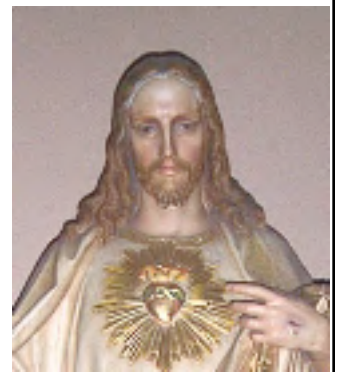
**Our Lady Queen of Peace statue:** for display in a church setting.  
Code 201 Photo Code: 3227, 9855, 9856, 9857, 9858.JPG  
Approx. 3.5 ft. tall incl. base approx 2 ft. wide

at New St. Monica



in Saint  
*Monica Church*

detail



**Sacred Heart statue:** for display in a church setting.  
Code 202 Photo Code: 9984, 9985,.JPG  
Approx. 4ft. tall (no estimated weight)





**Saint Anne with Young Blessed Virgin Mary statue:**  
for display in a church setting. Code 203  
Photo Code: 9981, 9982, 9983.JPG  
Approx. 4ft. tall (no estimated weight)



detail

**St. Anthony of Padua with Child Jesus:**  
for display in a church setting. Code 204  
Photo Code: 9943, 9944.JPG  
Approx. 4ft. tall (no estimated weight)

*all  
in Saint  
Monica  
Church*



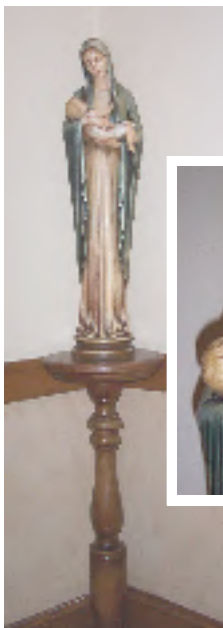
detail

**Saint Theresa of Lisieux (the Little Flower) statue:**  
for display in a church setting. Code 205  
Photo Code: 9939, 9941.JPG  
Approx. 4ft. tall (no estimated weight)



detail

**Saint Monica statue:**  
for display in a church setting. Code 206  
Photo Code: 9876, 9877, 9878.JPG  
- retouched from original Approx. 3 ft. tall  
(no estimated weight)



detail

**Blessed Mother with Child Jesus statue with wood platform**

Code 207

Photo Code: 6905, 6906 & 6907.JPG

Statue: approx 30 in. tall  
plaster or ceramic;  
pedestal stand has long spindle that fits in hole at base of hollow statue  
- wooden base approx. 12 in. diameter

*Ss. Peter & Paul Church*

at New St. Monica Rectory



**Infant of Prague statue**

Code 208

Photo Code: \_DSC0004 , \_DSC0005, 9865, 9866.JPG

Total Height: 18 in. tall ;  
plaster;

*Our Lady of Good Counsel*

Promised to Carmelites.

now at New St. Monica Rectory



**Saint Anthony with the Child Jesus statue**

Code 209

Photo Code: \_DSC0001 , \_DSC0002.JPG

Total Height: 18 in. tall ;  
- plaster;

*Our Lady of Good Counsel*



detail

**Guardian Angel statue:**

Code 210

Photo Code: 6902 , 6904 & 9860.JPG

- plaster;  
- approximately 18 inches tall

*Ss. Peter & Paul Church*

at New St. Monica



**Madonna with Child**

Code 211

Photo code 9875.JPG

Approximately 18 inches tall.

- ceramic or plaster  
- wall hung

*St. Monica chapel*



**St. Joseph the Worker ( ? )**

Code 212

Photo code 9923.JPG

Approximately 18 inches tall.

- plaster ; expressive features



detail

*St. Monica chapel*



from  
SS.  
Peter  
& Paul  
Church



**St. Peter the Apostle Receiving the Keys to the Kingdom**

Code 213 Photo Code: 6894, 6985, 6896, 7005, 7006.JPG

- large-sized painting on canvas; life-sized figures;
- photo has glare from camera flash

- Approximately 7 ft. tall x 4 ft. wide

at new St. Monica

**Sorrowful Mother painting with decorative frame**

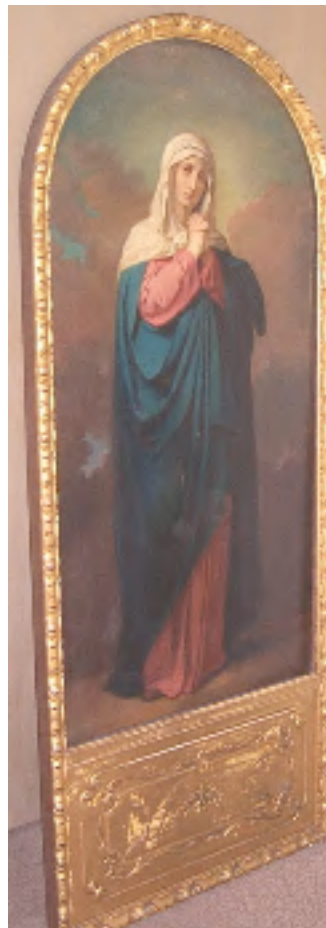
Code 214 Photo Code: 3047, 9880, 9881.JPG

- large-sized painting with gold-painted decorative frame
- painting measures approx.

3.5 ft. tall X 2.5 ft. width

- Approximately 5 ft. tall x 2.5 ft. wide

from SS. Peter  
& Paul Church



detail

at new St. Monica



**Good Shepherd painting with decorative frame**

Code 215 Photo Code: 2868, 2869,

9886, 9888.JPG

- large-sized painting with gold-painted decorative frame

- painting measures approx. 3.5 ft. tall X 2.5 ft. width

- Approximately 5 ft. tall x 2.5 ft. wide

from  
SS.  
Peter  
& Paul  
Church

at new St. Monica



**Christ the Redeemer image with simple gold-colored frame**

Code 216

Photo Code:

9890, 9891.JPG

- painting measures approx. 18 in. tall X 12 in. width

at St. Monica Rectory



**The Last Supper image with moderately ornate gold-colored frame**

Code 217 Photo Code: 9895.JPG ; painting measures approx.

20 in. tall X 40 in. width

at St. Monica Rectory

Page 45





**Pope John Paul II colored pencil / chalk portrait**  
with simple wood frame Code 218 Photo Code: 9896,  
9897.JPG Artist : D. Bellotti ; Year: 1973; frame measures  
approx. 30in. tall X 18 in. width *at St. Monica Rectory*



**Good Friday Scene from the Walls of Jerusalem** Code 219  
Photo Code 9898. JPG  
approx. 27 in . wide x 18 in. tall (landscape)  
*at St. Monica Rectory*



**Old Woman Peasant and an Old Male Peasant** Code 220  
Photo Code 9901. JPG  
two secular images in moderately detailed gold-colored frames  
each frame approx. 16 in . wide x 22 in. tall (landscape)  
*at St. Monica Rectory*



**Madonna & Child** image  
with gold-colored frame  
Code 221  
Photo Code: 9905.JPG

- frame measures approx.  
18 in. tall x 24 in. width  
(estimate)

*at St. Monica Rectory*



**Madonna & Child**  
image with cherub  
Code 222  
Photo Code:  
9909.JPG

-aged surface

-gold-colored frame

- frame measures  
approx. 32 in. wide  
x 24 in. tall  
(estimate)

*at St. Monica  
Rectory*



**Peasant Woman  
Praying the Rosary**

Code 223  
Photo Code:  
9912.JPG

-gold-colored frame

- frame measures  
approx. 18 in. wide  
x 12 in. tall  
(estimate)

*at St. Monica  
Rectory*





**Madonna & Child**  
image  
Code 224  
Photo Code:  
9915.JPG

- aged surface
- gold-colored frame
- frame measures  
approx. 28 in. wide  
x 20 in. tall  
(estimate)

*at St. Monica  
Rectory*



**Blessed Mother**  
image  
Code 225  
Photo Code:  
9917, 9918.JPG

- gold-colored frame
- frame measures  
approx. 18 in. wide  
x 18 in. tall  
(estimate)

*at St. Monica  
Rectory*



**Crucifixion**  
within Cross image

Code 226  
Photo Code:  
9924.JPG

- Greek inscriptions
- gold-colored frame
- frame measures  
approx. 12 in. wide  
x 12 in. tall  
(estimate)

*at St. Monica  
chapel*



**Last Supper image** Code 227

Photo Code 9930. JPG simple wooden frame  
- mixed media ultra-simplified presentation ; frame approx.  
20 in . wide x 16 in. tall (estimate)

*at St. Monica chapel*

**End**  
v. 1/2/08